

Alaska Department of Fish and Game

Habitat Section
Southeast Region



112-50-10300-2003-3006

ADDITION

Water body name:

Survey date: 9/14/2021; 9/14/2022

Quad: Sitka D-4

Species & Lifestage: CO

Upper Reach Latitude: 57.924625 **Longitude:** -135.240230

Survey crew: FC, EF, MR

Lower Reach Latitude: 57.925525 **Longitude:** -135.235568

Findings: We surveyed this cataloged stream using a backpack electrofisher, baited minnow traps, and GPS. We captured juvenile coho salmon, Dolly Varden, and cutthroat trout. The stream flows through a channel with gravel substrate and a 4 ft wide arch culvert (Table 1; Figures 1, 2).

Recommendations: Extend upper extent of Stream No. 112-50-10300-2003-3006 in the anadromous waters catalog (Figure 3).

Nomination: Pending

Table 1.—112-50-10300-2003-3006 survey data.

Waypoint	Latitude	Longitude	Notes	Stream Width ft	Stream Substrate	Habitat Features	Gradient %	Sample Effort	Sample Results
1816	57.924322	-135.238296	Young-of-year and 2-yr CO capture.	4-6	Small Gravel Large Gravel		2-4	EF	2 CO 2 DV 1 CT
1817	57.924628	-135.240249	Continued 2-yr CO capture.					EF	2 CO 1 CT
1818	57.924868	-135.241025	Resident fish capture.	4-6	Large Gravel Small Gravel		4-6	EF	3 CT 4 DV
1819	57.924510	-135.241398	Gradient increases slightly.	4-6	Large Gravel Small Gravel		4-6	EF	2 DV
2434	57.924365	-135.237565	Two minnow traps set above/below outlet/inlet of 4' squashed CMP. Downstream trap: 6 DV, 9 CT. Upstream trap: 2 CO, 3 DV, 3 CT.	2-4	Large Gravel Small Gravel		2-4	MT	2 CO 9 DV 12 CT



Figure 1.–Juvenile coho salmon captured at waypoint 1816.



Figure 2.–Culvert outlet at waypoint 2434.

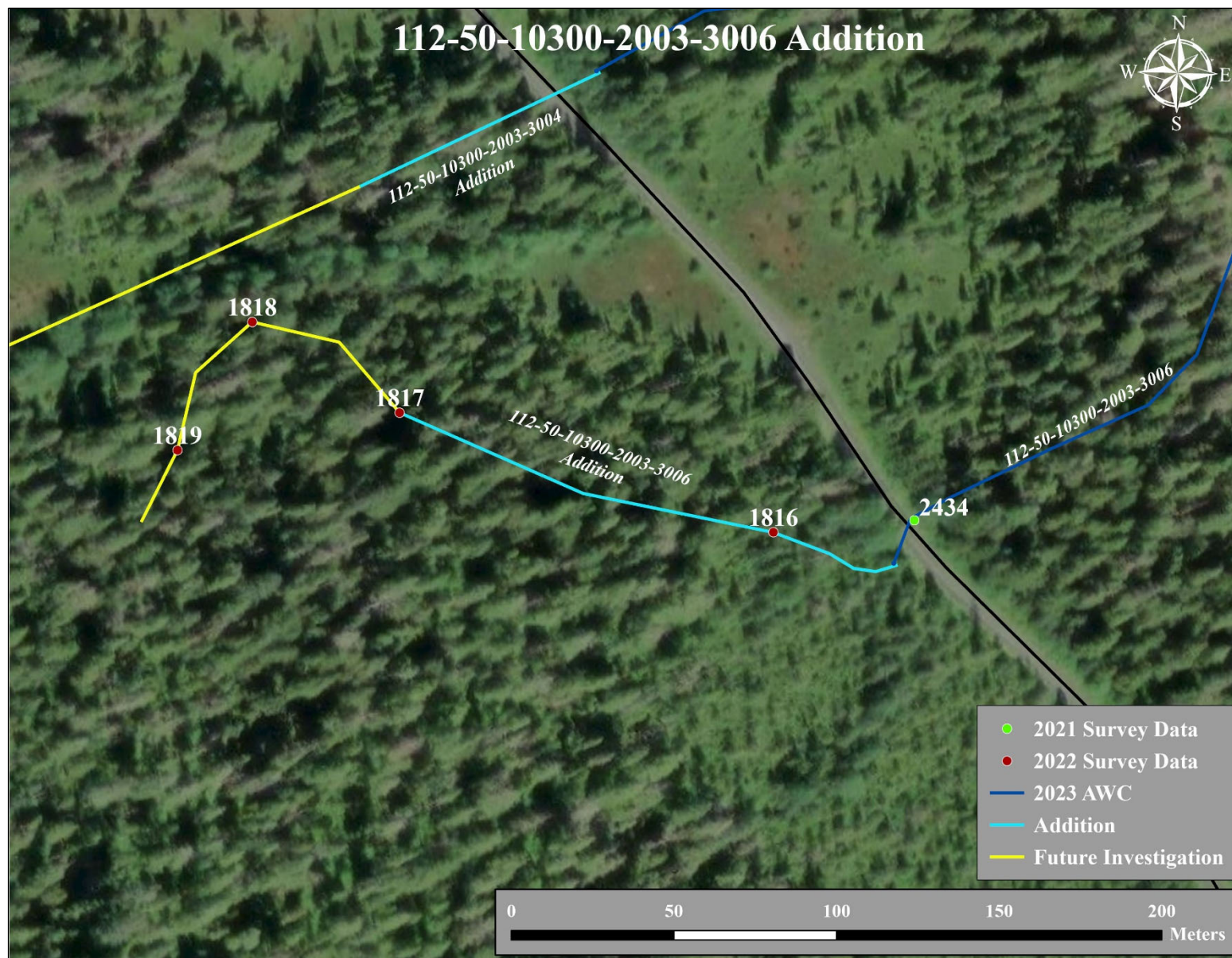


Figure 3.–Stream No. 112-50-10300-2003-3006 addition map.